



Frome Road, Writhlington

£259,950

- Energy Rating - E
- Garage & Parking
- Ideal For First Time Buyers Or Investors Alike
- Writhlington School Close By
- Log Burner
- NO ONWARD SALES CHAIN
- On Bus Routes
- General Updating Required
- Close Distance To Local Amenities

***** 3D INTERACTIVE TOUR AVAILABLE*****
 BARONS welcome to the market WITH NO ONWARD SALES CHAIN this three bedroom cottage, located in Writhlington and close distance to local amenities. . In need of some general updating and ideal for the first time buyer or investors alike. The property comprises Entrance porch, Hallway 18ft living/dining room with log burner, Kitchen with Utility and ground floor bathroom with separate shower cubicle. On the first floor you are greeted with two double bedrooms with built in wardrobes and a single bedroom. The property further benefits from parking for at least two vehicles, a larger than average garage with a workshop, a shared stone storage shed/WC and a great size garden. Call us today to arrange your viewing on 01761 411411.

Living/Dining Room 18'3 x 11'4 (5.56m x 3.45m)

Kitchen 11'4 x 7'10 (3.45m x 2.39m)

Downstairs Bathroom 7'5 x 5'5 (2.26m x 1.65m)

Bedroom One 12'2 x 11'5 (3.71m x 3.48m)

Bedroom Two 10'4 x 6'11 (3.15m x 2.11m)

Bedroom Three 7'10 x 7'5 (2.39m x 2.26m)

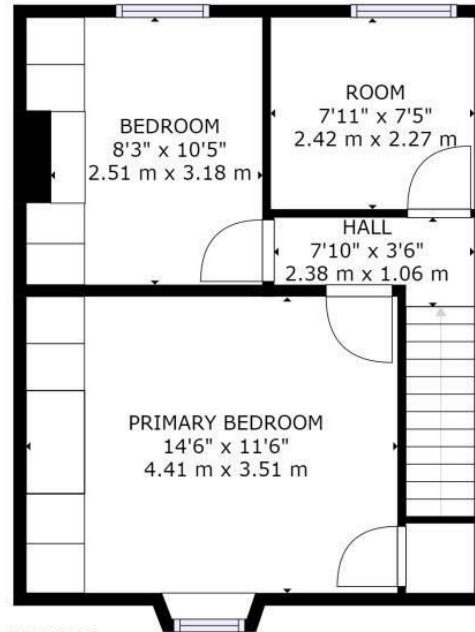
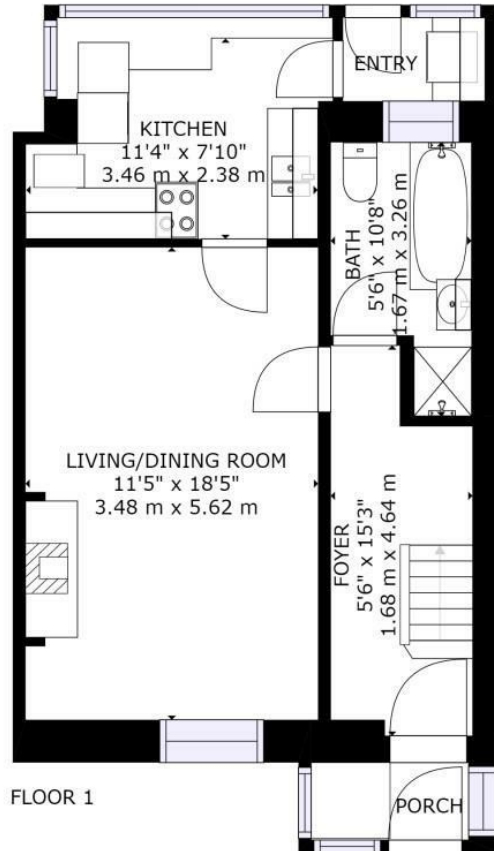
Please Note

Tenure Status - Freehold

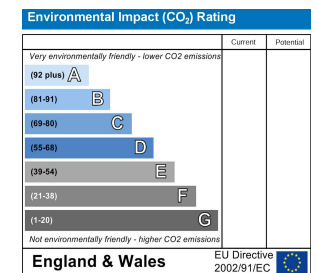
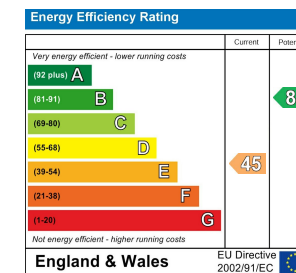
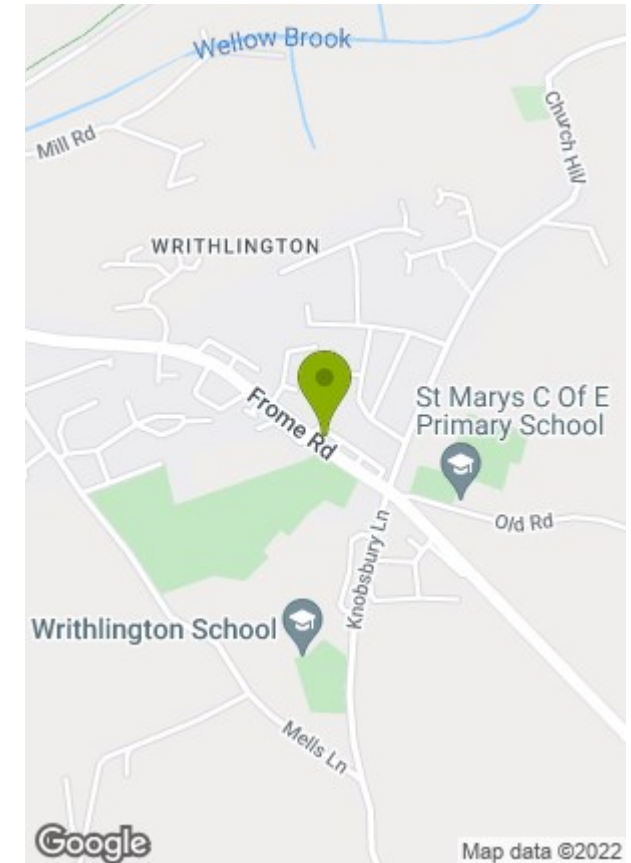
Council Tax Band - B







GROSS INTERNAL AREA
FLOOR 1: 473 sq. ft, 44 m², FLOOR 2: 392 sq. ft, 36 m²
EXCLUDED AREAS: PORCH: 19 sq. ft, 2 m²
TOTAL: 864 sq. ft, 80 m²
SIZES AND DIMENSIONS ARE APPROXIMATE, ACTUAL MAY VARY.



These particulars, whilst believed to be accurate are set out as a general outline only for guidance and do not constitute any part of an offer or contract. Intending purchasers should not rely on them as statements of representation of fact, but must satisfy themselves by inspection or otherwise as to their accuracy. No person in this firm's employment has the authority to make or give any representation or warranty in respect of the property.